

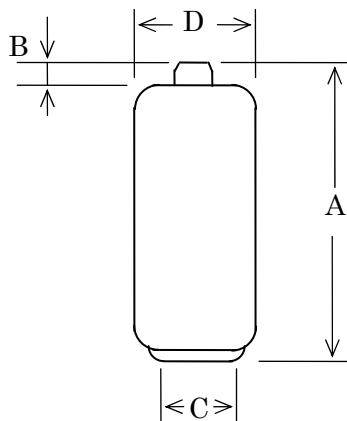
MODEL: LR6/AM-3 (Blue)

Type: Alkaline-Manganese Dioxide Primary Battery

SPECIFICATIONS

Nominal Voltage : 1.5 V

• DIMENSIONS



Mark	Items	Standards (mm)
A	Overall Height	49.85 ± 0.65
B	Height of Positive Terminal	1.0 Min.
C	Diameter of Negative Terminal	7.0 Min.
D	External Diameter	14.0 ± 0.5

• CHARACTERISTICS (Fresh)

Items	Standards	Conditions
O.C.V.	Min. 1.50 V	
Duration	Min. 4.0 h	Load Resistance: 3.9 Ω * 1h/day Cut off Voltage: 0.8 V
	Min. 11.5 h	Load Resistance: 10 Ω * 1h/day Cut off Voltage: 0.9 V
	Min. 60 h	Load Resistance: 43 Ω * 4h/day Cut off Voltage: 0.9 V

• Country of origin : Indonesia